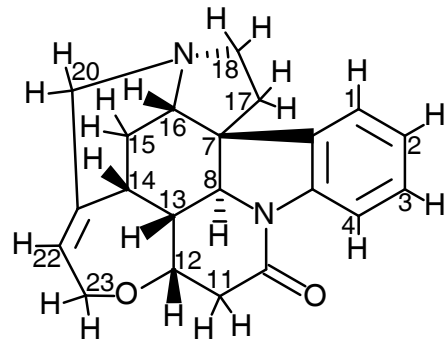


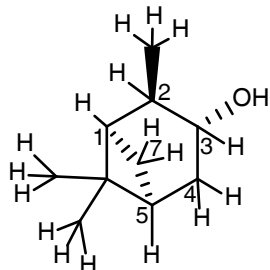
Strychnine



R(7)**S**(8)**S**(12)**R**(13)**R**(14)**S**(16)

	RDCs (Hz)									
	P3D PBLG	PBLG	PELG	PMMA	PIAF	PS	PA1	PL1	PALV	PADV
CH1	-114.9	-178.9	-43.5	37.0	19.6	-9.3	8.5	35.0	27.9	19.9
CH2	-118.1	-36.9	-15.3	22.8	-3.3	0.8		-0.5	-14.9	-11.7
CH3	-185.5	-69.8	-12.8	15.7	5.6		-16.6	-18.4	-11.8	-5.2
CH4	-115.7	-182.4	-43.5	37.8	21.2	-10.5	10.6	39.5	28.0	21.5
CH8	84.5	87.1	24.6	-17.5	-11.0	3.6		-5.7		
CH12	200.1	146.8	32.4	-40.0	-10.0	11.4			-4.1	-2.6
CH13	15.6	48.9	12.2	-11.0	-5.7	-3.6	3.6		-5.8	-4.8
CH14	184.1	151.7	31.5	-38.7	-11.5	12.0			-8.4	-5.4
CH16	-101.1	-49.6	-14.8	25.1	-1.9	1.8		-6.4		
CH22	-34.1	-1.1	3.0	-2.8	2.5	-6.6	6.0		1.0	0.0

(-)-IPC



R(1)**R**(2)**S**(3)

	RDCs (Hz)									
	P3D PBLG	PBLG	PBDG	PELG	PALF300	PALF316	PL1	PALV	PADV	PPEMG
CH1	17.8	13.3	14.5	9.2	6.9	2.7	9.8	-23.6	7.4	9.0
CH2	2.9	-7.4	-5.2	-12.1	5.0	4.7	34.2	13.8	1.0	12.0
CH3	3.7	11.1	13.1	2.9	6.0	-2.7	21.6	11.6	5.3	64.0
CH5	0.7	-5.5	-5.3	-7.3	-10.2	0.1	-25.2	-10.3	-14.0	52.0
CH ₂ 4	1.1	-4.0	-4.4	-3.4	-7.6	-1.3	-19.7	4.6	-2.9	-13.0
CH ₂ 7	10.8	10.9	14.3	-2.4	19.0	5.5	56.2	-3.8	10.0	40.0
	-27.5	-16.4	-17.4	-9.8	-4.8	2.2	-0.5	15.1	-1.9	
	-1.5	4.1	1.9	13.6	1.2	-5.5	-4.7	9.5	6.9	