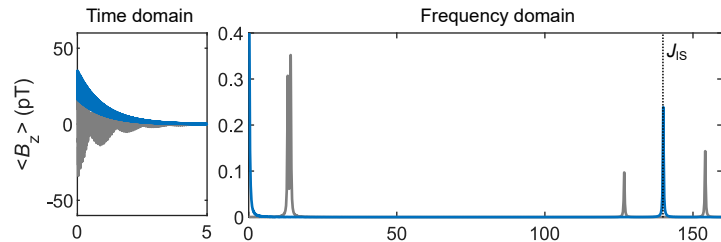
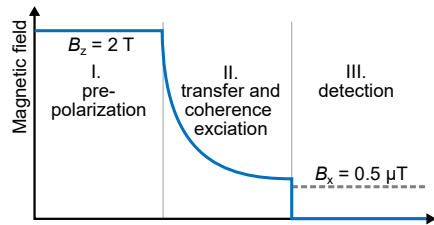
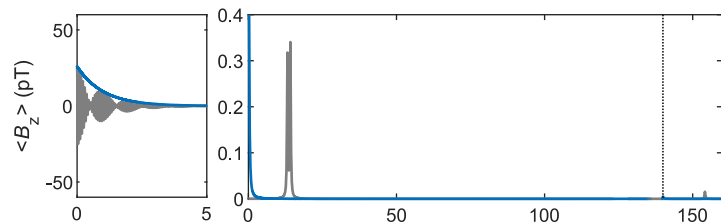
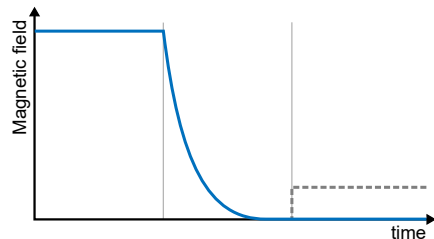
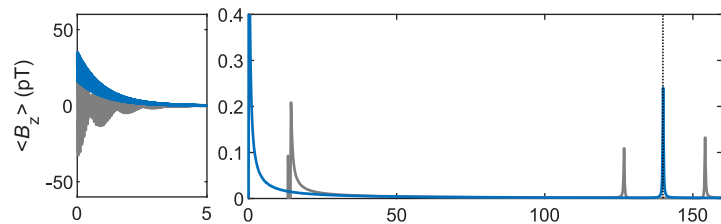
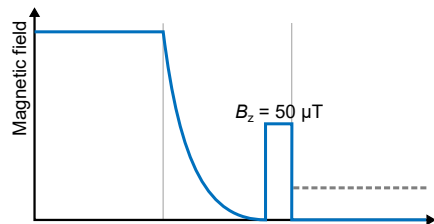
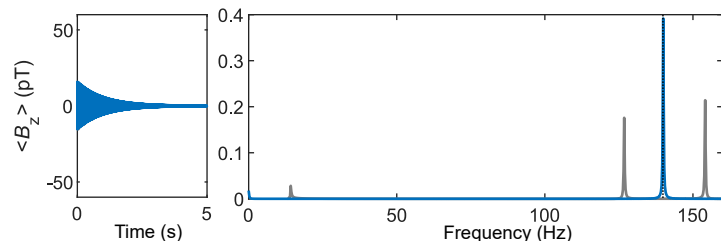
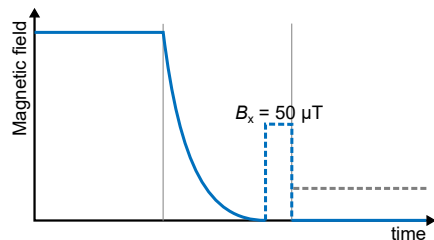


(a) Sudden field drop**(b) Adiabatic field drop****(c) Adiabatic field drop and pulse along the z-axis****(d) Adiabatic field drop and pulse along the x-axis**

— B_z for exp. at ZF and ULF
 - - - B_x for exp. at ZF - - - B_x for exp. at ULF

— Signal at ZF — Signal at ULF