

Efficient polynomial analysis of MAS spinning sidebands and application to order parameter determination in anisotropic samples

Günter Hempel¹, Paul Sotta², Didier R. Long³, and Kay Saalwächter¹

¹Martin-Luther-Universität Halle-Wittenberg, Institut für Physik – NMR, Betty-Heimann-Str. 7, 06120 Halle, Germany

²Ingénierie des Matériaux Polymères, INSA Lyon/CNRS UMR 5223, 17 avenue Jean Capelle, 69621 Villeurbanne cedex, France

³Université Lyon, INSA Lyon/CNRS, UCBL, MATEIS, UMR5510, 69100 Villeurbanne, France

Correspondence: Günter Hempel (guenter.hempel@physik.uni-halle.de)

Abstract. Chemical shift tensors in ^{13}C solid-state NMR provide valuable localized information on the chemical bonding environment in organic matter, and deviations from isotropic static-limit powder lineshapes sensitively encode dynamic-averaging or orientation effects. Studies in ^{13}C natural abundance require magic-angle spinning (MAS), where the analysis must thus focus on spinning sidebands. We propose an alternative fitting procedure for spinning sidebands based upon a polynomial expansion that is more efficient than the common numerical solution of the powder average. The approach plays out its advantages in the determination of CST principal values from spinning-sideband intensities and order parameters in non-isotropic samples, which is here illustrated on the example of stretched glassy polycarbonate.

1 Introduction

The chemical-shift anisotropy (CSA) is one of the most useful interactions in solid-state NMR, as the principal values of its tensor span a convenient frequency range for many relevant heteronuclei present in organic materials, such as ^{13}C , ^{15}N or ^{31}P . Excluding effects of intermediate motions on the NMR timescale, deviations from the static-limit isotropic powder lineshapes, characterized by the 3 principal values or the 3 commonly derived invariants (isotropic shift, anisotropy and asymmetry), are immediately informative about the geometry of fast-limit motions (Kulik et al., 1994; Titman et al., 1994) as well as orientation effects in non-isotropic samples (Maricq and Waugh, 1979; Henschel et al., 1978). The latter are the main concern of this contribution.

The most complete information would be the extraction of the full orientation distribution function (ODF), which is best achieved with the dedicated “DECODER” 2D experiment involving a mechanical sample flip (Schmidt-Rohr et al., 1992), or with some compromises in special cases even from 1D spectra (Hempel and Schneider, 1982). Alternatively, the anisotropy can be quantified by orientational moments, which are proportional to expansion coefficients of the orientation distribution in terms of Legendre polynomials. For the evaluation of static powder lineshapes, two different schemes for the estimation of orientational moments were applied, (i) a decomposition of the spectra into elementary spectra belonging to different Legendre polynomials (Henschel et al., 1978), or (ii) the estimation of the orientational moments from the lineshape moments (Hempel et al., 1999). All these low-resolution approaches suffer from spectral overlap, leaving selective isotope labeling, possibly also

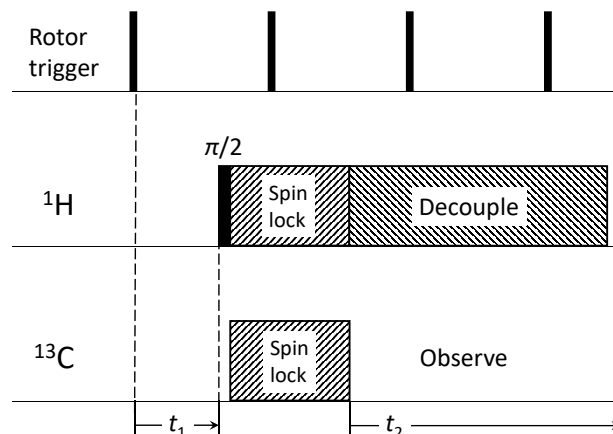


Figure 1. Pulse sequence for 2D syncMAS (Harbison et al., 1987). The direct dimension consists of the usual data acquisition time domain after cross polarization, while the indirect dimension consists in an incrementation of the delay between a rotor trigger and the start of the actual pulse sequence, covering a single rotor period T_r typically following $t_1 = i T_r / 2^n$ with $i = 0 \dots 2^n$ ($2^n=16$ in our case).

with ^2H (Spiess, 1982) and harnessing its well-defined quadrupolar coupling, as a certainly non-routine and often unfeasible alternative.

Multiple sites even in natural abundance of ^{13}C can of course be addressed in single experiments using fast magic-angle spinning (MAS), but at the expense of removing the anisotropy effects from the spectra. One must then rely on recoupling experiments such as CODEX (deAzevedo et al., 2000) or the more dedicated SUPER experiment (Liu et al., 2002), but these are often subject to uncertainties related to scaling factors and line-broadening arising from experimental imperfections. In this paper, we demonstrate that a somewhat “revisionist” approach of using lower spinning frequencies and the focus on a spinning sideband (SSB) manifold can help to solve a given problem without strong requirements concerning the sample or the spectrometer hardware. A simple comparison of sideband intensities of an isotropic vs. an oriented sample may be sufficient. With some more effort in terms of experimental time, one can record a series of spectra with incremented triggered rotor phase, resulting in the 2D “syncMAS” experiment (Harbison et al., 1987), which enables much better accuracy (see Fig. 1). A further improvement in line separation is provided by the time-consuming 3D ORDER method (Titman et al., 1993), where spinning sidebands of different order ~~are~~ separated in different 2D planes of the 3D stack.

In any such experiment, precise knowledge of the CS tensor is required, which can again be deduced from MAS sidebands. A famous analytical relation between tensor and SSB intensities was given by Herzfeld and Berger (1980), [equations \(24\) and \(25\) herein](#). However, ~~their equation is far too complicated to be applied,~~ [see below](#). Instead, computer programs involving numerical solutions of the powder average integral are nowadays available and readily applicable. One can proceed along this line and obtain orientational moments in an anisotropic sample by numerical calculation of SSB subspectra. At this point, we argue that a more simple analytical connection between SSB intensities and anisotropy parameters would be very helpful, for instance in the form of polynomials. Then, well-established fitting procedures (such as Gauss-Newton,

Levenberg-Marquardt and others) could be applied, also for the estimation of the uncertainties. The aims of this paper are as follows: (i) The introduction of an exact polynomial representation of SSB intensities. This is tested by evaluating SSB in glycine, for which the CSA principle values are known from single-crystal measurements. (ii) The derivation of a sixth-order polynomial approximation of syncMAS NMR data. This is demonstrated to be of great use in estimating the orientational moments in stretched glassy polycarbonate (PC). Our data analysis approach offers more flexibility with regards to the inherent model assumptions, which cannot as easily be tested or changed within the originally proposed data analysis scheme relying on pre-calculated subspectra (Harbison et al., 1987). It goes without saying that our results are readily generalized for the case of dipole-dipole interactions (for heteronuclear or isolated homonuclear spin pairs), and also for first-order quadrupolar interactions (^2H , ^7Li).

2 Theoretical part

2.1 Definitions

2.1.1 CSA tensor parameters

In solid-state NMR, the anisotropic electronic shielding effect is written as a dimensionless tensor $\underline{\underline{\sigma}}$,

$$\mathbf{B}_{\text{loc}} = (1 - \underline{\underline{\sigma}})\mathbf{B}_0, \quad (1)$$

where \mathbf{B}_0 the external magnetic field and \mathbf{B}_{loc} the local field at the position of the nucleus. The shielding effect is always referenced to a known isotropic shift of a reference compound σ_{ref} ($\mathbf{1}$: unit tensor),

$$\underline{\underline{\delta}} := \underline{\underline{\sigma}} - \sigma_{\text{ref}} \cdot \mathbf{1}. \quad (2)$$

The tensor, henceforth referred to as CST (chemical-shift tensor), has only real eigenvalues and is uniquely defined by 6 independent quantities, where one commonly reports 3 eigenvalues and 3 Euler angles, the latter characterizing the orientation of the principal-axes frame (PAF). For an isotropic static powder sample or a MAS sideband manifold the orientation information is lost and one can only measure the 3 eigenvalues. We follow the common convention for the principal components: δ_{33} is the eigenvalue which deviates most from the isotropic shift $\delta_{\text{iso}} := (\delta_{11} + \delta_{22} + \delta_{33})/3$, and δ_{22} deviates least. Alternatively, one can also use only the invariants: isotropic shift δ_{iso} , anisotropy $\delta := \delta_{33} - \delta_{\text{iso}}$, and asymmetry parameter $\eta := (\delta_{22} - \delta_{11})/\delta$. With this we have two possibilities: $\delta_{33} < \delta_{\text{iso}} \leq \delta_{22} \leq \delta_{11}$ and δ is positive, or $\delta_{33} > \delta_{\text{iso}} \geq \delta_{22} \geq \delta_{11}$ and δ is negative. In either case we fulfil the convention $0 \leq \eta \leq 1$. For sake of simplicity we assume in the following that the spectrometer frequency is set to the center of the powder pattern, i.e. $\delta_{\text{iso}} := 0$.

We finally comment on an often neglected aspect: As there are 6 possibilities to assign the three eigenvalues to three principal axes of the CST, there are 6 solutions for the pair $\{\delta, \eta\}$. Exchange of the values for δ_{11} and δ_{22} simply changes the sign of η but cyclic permutation of the indices produces more complex changes. The resulting 6 value pairs all yield the identical static-limit powder spectrum or SSB pattern. Only one of them fulfills $0 \leq \eta \leq 1$, but some cases exist where it might be helpful to deviate

from this convention. One example is discussed below, where the CST of para-substituted phenylene carbons will be assigned in different ways to the PAF. For sake of simplicity, it will be advantageous to surrender the numbering order from above for one of the carbons; the benefit will be a common frame for both carbons which simplifies the data evaluation appreciably.

2.1.2 Angle conventions, transformations and orientational moments

The focus of the second part is on the description of orientational effects of molecular-scale structural units characterized by a given distribution of orientations. Following Harbison et al. (1987) and Schmidt-Rohr and Spiess (1994), we summarize the relevant definitions. Starting with the common transformation from the PAF to the ~~molecular~~-molecular frame (which we will later identify with a main-chain section of the polymer backbone), we need an additional frame that is related to the macroscopic sample deformation (“director frame”). The order of the required transformations is:

PAF \rightarrow molecular frame \rightarrow director frame \rightarrow MAS rotor frame \rightarrow lab frame.

For the purpose of symbolic treatment, two changes are made to simplify the resulting expressions as much as possible. For the background of both arguments, we refer to Hentschel et al. (1978); Harbison et al. (1987); Henrichs (1987). First, the orientation of a frame with respect to its preceding one is characterized by three Euler angles. Following this scheme, for the transformation from one of the frames above to the next, three single-angle rotations are required. It is well-known property of sequential Euler rotations that the first single-angle rotation of a succeeding transformation is simply the continuation of the third single-angle rotation of the preceding transformation, i.e. both rotations are performed around the same axis. Particularly for symbolic treatment the result will be simplified substantially if both equal-axis rotations are combined to a single rotation by the sum angle. This simplifies the problem to only two rotations per transformation between succeeding frames, which are (1) rotation around the z axis such that the y axis is parallel to the new y axis and both xz planes are parallel, and (2) rotation around the y axis to reach the new frame. This results in a sequence of 4 double rotations alternating around z and y axes instead of 4 triple transformations by the complete sets of Euler angles. The first z rotation is included already; the last z rotation remains, however this is a rotation around B_0 which has no meaning here and is never performed.

Second, the coordinate transformations are usually performed in Cartesian vector space, i.e., the 3×3 matrix of the CST is multiplied bilinearly from left as well as from right with 3×3 matrices. Also here, a possibility for simplification is used which is in the spirit of using a spherical representation that relies on linear combination using Wigner matrix elements, but which is defined in Cartesian space. We use symmetric matrices with 6 independent elements instead of 9 ones in the general case, which do not require the full set of operations. Instead of the bilinear matrix operations, we rather use transformations in tensor space (details are to be published under separate cover), in which the traceless part of the CST is represented by a 5-membered column vector. The transformation matrices have the size 5×5 , but have to be applied only once, from left. This reduces the number of multiplication and addition operations which is important for working with analytical expressions. Matrices for z rotation and y rotation by angle ψ are denoted by $\mathbf{R}_z(\psi)$ and $\mathbf{R}_y(\psi)$, respectively.

The following angles are relevant:

- CST PAF to molecular frame: z rotation by ψ (azimuth) and y rotation by α (polar angle)

- molecular frame to director frame: z rotation by ε and y rotation by β
- director frame to rotor frame: z rotation by φ and y rotation by β_2
- rotor frame to lab frame: z rotation by γ and y rotation by the magic angle $\vartheta_{\text{MA}} = \arccos(\frac{1}{\sqrt{3}})$

110 With these definitions we can move to the specific features of the given problem. Following Roe (1970) we have an ODF $W(\varepsilon, \cos \beta, \varphi)$ of Euler angles. This function can be expanded in terms of Wigner matrices; the determination of the expansion coefficients is the goal of our syncMAS experiments (see Fig. 1). For uniaxial deformation the ODF depends on the polar angle β only, and not on the azimuth φ . In this case there is no preferred lateral orientation of the molecular units with respect to the plane spanned by the z axes of molecular frame and the director frame, which means that all ε have equal probability. It is then sufficient to describe orientation effects by a 1D uniaxial function $U(\cos \beta)$. It can be expanded in terms of Legendre polynomials $P_l(\cos \beta)$,

$$U(\cos \beta) = \sum_{n=0}^{\infty} C_n P_n(\cos \beta) ; \quad n \in \mathbb{N} . \quad (3)$$

The expansion coefficients are

$$C_n = \frac{1}{2n+1} \langle P_n \rangle \quad \text{with} \quad \langle P_n \rangle := \int_0^1 P_n(\cos \beta) U(\cos \beta) d\cos \beta ; \quad n \in \{1, 2, \dots\} . \quad (4)$$

120 According to Henrichs (1987) we denote the $\langle P_n \rangle$ as orientational moments. NMR methods are sensitive only to the symmetric part of the ODF of the CSTs, $U(\cos \beta)$; any non-zero skew-symmetric parts cannot be detected by evaluating CSA spectra; hence all odd orientational moments vanish.

2.2 Calculation procedure

The treatments of the 1D MAS and the 2D syncMAS experiments are largely equivalent, and we here summarize the sequence of calculation steps.

1. Estimation of the angle Φ ("phase") between the instantaneous magnetization direction and the initial direction by time integration of the instantaneous precession frequency $\omega(t)$;

$$\Phi(t) = \int_0^t \omega(t') dt' \quad (5)$$

130 ω and therefore Φ will depend on the orientation of the CST with respect to \mathbf{B}_0 , which depends periodically on time due to MAS. The angles which describe the tensor orientation are chosen such that the time dependence is contained in one angle termed rotor angle γ specifying the instantaneous rotor position.

For 1D MAS:

$$\gamma(t) = \omega_r t + \gamma_0 \quad (6)$$

For 2D syncMAS:

$$\gamma(t_1, t_2) = \omega_r t_2 + \gamma_0(t_1) \quad ; \quad \gamma_0(t_1) = \omega_r t_1 + \gamma_{00} \quad (7)$$

γ_0 describes the rotor position at the end of signal excitation (= start of the data acquisition) of the current experiment; γ_{00} describes the rotor position at the start of acquisition of the very first of the 2D slices. In case of 1D MAS, we used the well-known equations from the literature for $\Phi(t)$, see the next section. For describing the 2D experiment, an equivalent analytical expression for the instantaneous precession frequency is easily derived and integrated.

2. Calculation of orientational averages of phase powers $\langle \Phi^n(t) \rangle_{\text{or}}$. In the particular case of an isotropic sample, this average is the powder average $\langle \Phi^n(t) \rangle_{\text{powder}}$.

3. Assembling the FID and estimation of the SSB intensities by Fourier analysis via

$$FID(t) = \left\langle e^{i\Phi(t)} \right\rangle_{\text{or}} = \sum_{n=0}^{\infty} \frac{i^n}{n!} \langle \Phi^n(t) \rangle_{\text{or}} \quad (8)$$

The periodicity of the MAS signal originates from the periodic modulation of the precession frequency. The integration providing the phase generally gives the sum of a likewise periodic component and a linear component. If the angle between rotation axis and \mathbf{B}_0 is exactly the magic angle $\arccos \frac{1}{\sqrt{3}}$, and if the spectrometer frequency is set to the isotropic average of the CS, the linear term vanishes and Φ is a purely periodic function. This further holds for the orientation-averaged phase powers. Therefore, for physical reasons we expect periodic FIDs which can be written as Fourier series:

$$FID(t) = \begin{cases} \sum_{m=-\infty}^{\infty} I_m e^{im\omega_r t} & \text{for 1D MAS} \\ \sum_{m=-\infty}^{\infty} \sum_{k=-\infty}^{\infty} I_{mk} e^{im\omega_r t_2} e^{ik\omega_r t_1} & \text{for 2D syncMAS} \end{cases} \quad (9)$$

After FT, the I_m appear as intensities of the SSB in the 1D MAS spectrum and the I_{mk} as intensities of the 2D SSB in the 2D syncMAS spectrum.

2.3 Polynomials for 1D SSB intensities of an isotropic sample

Step 1 (phase):

For this case we can neglect the intermediate transformations involving the molecular frame and the director frame, and use a single transformation from the CST PAF directly into the rotor frame using only the angles ψ (azimuth) and α (polar angle). In the absence of thermal motion, the time dependence due to the motion of the tensor under MAS leads to (Schmidt-Rohr and Spiess, 1994; Duer, 2002):

$$\Phi(t) = \frac{\omega_0}{\omega_r} \frac{\delta}{12} \left\{ 4\sqrt{2} \eta \sin \alpha \sin 2\psi f_c(t) + 2\eta \cos \alpha \sin 2\psi f_{2c}(t) - 2\sqrt{2} (3 - \eta \cos 2\psi) \sin 2\alpha f_s(t) + \left[3\sin^2 \alpha + \frac{\eta}{2} (3 + \cos 2\alpha) \cos 2\psi \right] f_{2s}(t) \right\} \quad (10)$$

160 with the abbreviations

$$\begin{aligned} f_c(t) &:= \cos(\omega_r t + \gamma_0) - \cos \gamma_0 ; & f_{2c}(t) &:= \cos(2\omega_r t + 2\gamma_0) - \cos 2\gamma_0 ; \\ f_s(t) &:= \sin(\omega_r t + \gamma_0) - \sin \gamma_0 ; & f_{2s}(t) &:= \sin(2\omega_r t + 2\gamma_0) - \sin 2\gamma_0 . \end{aligned} \quad (11)$$

$\omega_0 = 2\pi f_0$ with f_0 being the Larmor frequency and ω_r is the spinning rate in units of angular frequency.

Step 2 (orientational averages of phase powers):

165 Steps 2 and 3 could be performed by inserting these expressions into equation (8) by symbolic software (here Mathematica) for $n \leq 14$. These are the same expressions as listed below. However, a general expression was not found in this way. To obtain such a general expression for Φ^n with $n \in \mathbb{N}$ to obtain terms of arbitrarily high order, we factorize $\langle \Phi^n \rangle$ into a term which depends only on time and one which depends only on orientation. The separation of time and orientation dependence enables symbolic calculations. This can be achieved by replacing

$$170 \quad f_c(t) = \cos(\omega_r t + \gamma_0) - \cos \gamma_0 \quad \rightarrow \quad -2 \sin \gamma_2 \sin \frac{\omega_r t}{2} \quad \text{with } \gamma_2 := \frac{\omega_r t}{2} + \gamma_0 \quad (12)$$

and similarly for $f_s(t)$, $f_{2c}(t)$ and $f_{2s}(t)$.

The phase powers can be written as

$$\Phi^n = \left(\frac{\omega_0 \delta}{\omega_r} \right)^n \left(A \sin \frac{\omega_r t}{2} + B \sin \omega_r t \right)^n \quad (13)$$

with

$$\begin{aligned} A &:= -\frac{2\sqrt{2}}{3} \left[\eta \sin \gamma_2 \sin \alpha \sin 2\psi + \frac{1}{2} \cos \gamma_2 \sin 2\alpha (3 - \eta \cos 2\psi) \right] \\ 175 \quad B &:= \frac{1}{3} \left\{ -\eta \sin 2\gamma_2 \cos \alpha \sin 2\psi + \frac{1}{2} \cos 2\gamma_2 [\eta (1 + \cos^2 \alpha) \cos 2\psi + 3 \sin^2 \alpha] \right\} \end{aligned} \quad (14)$$

γ_2 describes the rotor position in the middle of the integration interval $[0, t]$ in eq. (5). It can be regarded as an azimuthal angle which can be used for a powder average. Therefore, A and B are effectively time-invariant. In combination with the binomial law we can convert eqn. (13) to

$$\Phi^n = \left(\frac{\omega_0 \delta}{\omega_r} \right)^n \sum_{k=0}^{[n/2]} \binom{n}{2k} A^{2k} B^{n-2k} \sin^{2k} \frac{\omega_r t}{2} \sin^{n-2k} \omega_r t . \quad (15)$$

180 Here we made use of the fact that powder averages with odd powers of A vanish. $[n/2]$ denotes the integer part of $n/2$.

We now have a sum of products in which orientation- and time-dependent terms are separated into separate factors. Thus, powder average can be restricted to $A^{2k} B^{n-2k}$:

$$\langle A^{2k} B^{n-2k} \rangle_{\psi, \alpha, \gamma_2} = \frac{1}{8\pi^2} \int_0^{2\pi} d\gamma_2 \int_0^\pi d\alpha \sin \alpha \int_0^{2\pi} d\psi A^{2k} B^{n-2k} \quad (16)$$

The following auxiliary formulae can be further be applied; for averaging over an azimuth ψ ,

$$185 \quad \langle \sin^m \psi \cos^n \psi \rangle_\psi = \begin{cases} \frac{(m-1)!!(n-1)!!}{(m+n)!!} & \text{if } m \text{ and } n \text{ are even} \\ 0 & \text{otherwise} \end{cases} \quad (17)$$

and for γ_2 , for averaging over a polar angle α .

$$\langle \cos^n \alpha \sin^m \alpha \rangle_{\cos \alpha} = \frac{m!!(n-1)!!}{(m+n+1)!!} \quad \text{for even } m \text{ and } n. \quad (18)$$

Both relations can be proven by complete induction; see the Supplement S1. The operation $!!$ denotes the double factorial ($n! = n!! \cdot (n-1)!!$).

190 Insertion of the auxiliary formulae yields

$$\begin{aligned} \langle A^{2k} B^{n-2k} \rangle_{\text{or}} &= \sum_{p=0}^k \sum_{q=0}^k \sum_{r=0}^{n-2k} \frac{k!}{p!q!(k-p-q)!} \binom{n-2k}{r} \langle a^p b^q c^{k-p-q} d^r e^{n-2k-r} \rangle \\ &\times \frac{(p+r-1)!!(q+n-2k-r-1)!!}{(p+q+n-2k)!!} \cdot \frac{1+(-1)^{p+r}}{2} \cdot \frac{1+(-1)^{q+n-2k-r}}{2}. \end{aligned} \quad (19)$$

We insert eqn. (19) into eqn. (13) and replace the trigonometric expressions by complex exponentials (again applying the binomial law):

$$\sin^{2k} \frac{\omega_r t}{2} \sin^{n-2k} \omega_r t = \frac{1}{(2i)^n} \sum_{a=0}^{2k} \sum_{b=0}^{n-2k} \binom{2k}{a} \binom{n-2k}{b} (-1)^{a+b} e^{i(n-k-a-2b)\omega_r t} \quad (20)$$

195 $\langle \Phi^n \rangle$ is described now by a very long expression which can be found in the Supplement S2.

Step 3 (assembling the FID and Fourier analysis):

After inserting $\langle \Phi^n \rangle$ into eqn. (8) and comparing with eqn. (9) we obtain for the Fourier coefficients

$$\begin{aligned} I_m &= \sum_{n=m}^{\infty} \frac{n!}{2^n} \left(\frac{\omega_0 \delta}{\omega_r} \right)^n \sum_{k=0}^{[n/2]} \sum_{b=0}^{n-2k} \frac{(-1)^{n-k-m-b}}{(n-k-m-2b)!(3k-n+m+2b)!(n-2k-b)!b!} \\ &\times \sum_{p=0}^k \sum_{q=0}^k \sum_{r=0}^{n-2k} \frac{k!}{p!q!(k-p-q)!} \binom{n-2k}{r} \frac{2^{4k+r+p}}{6^n} (-1)^r \\ &\times \frac{(p+r-1)!!(q+n-2k-r-1)!!}{(p+q+n-2k)!!} \cdot \frac{1+(-1)^{r-p}}{2} \cdot \frac{1+(-1)^{q+n-2k-r}}{2} \\ &\times \sum_{s=0}^q \sum_{t=0}^{(k-q-p)} \sum_{u=0}^{(n-2k-r)} (-1)^{q-s+u} \binom{q}{s} \binom{k-p-q}{t} \binom{n-2k-r}{u} \cdot \frac{(2k)!! \cdot (p+r+2s+2t+2u-1)!!}{(2k+p+r+2s+2t+2u+1)!!} \times \\ &\times \sum_{v=0}^{(p+2s+2t+u)} \sum_{w=0}^{(n-2k-r-u)} (-1)^v 3^{n-2k+p-r+2s+2t-v-w} \binom{p+2s+2t+u}{v} \binom{n-2k-r-u}{w} \eta^{v+w+2k-p-2s-2t+r} \\ &\times \frac{(v+w-1)!!(2k-p-2s-2t+r-1)!!}{(v+w+2k-p-2s-2t+r)!!} \cdot \frac{1+(-1)^{v+w}}{2} \cdot \frac{1+(-1)^{r-p}}{2} \end{aligned}$$

200 This is our first core result. Within the infinite limits, this is an *exact* expression for the intensity of the SSB of m -th order, not an approximation. This claim is based on the fact that all formulae, series, etc., which entered the derivation of equation (21) are exact, assumed all sums are taken in the given limits. In practice, this equation can be used for generating terms of arbitrary order. Of course the finite number of terms is a kind of approximation. However, it is possible to choose as much terms as necessary for reaching the desired accuracy. Importantly, its numerical evaluation will be appreciably faster than a

205 numerical powder average of eqn. (8). However, it cannot be applied immediately because of its complex structure. However, using symbolic software it is easily possible to create polynomials for I_m to reach arbitrary precision; a Mathematica notebook is given in the Supplement S3. Just for the purpose of illustration, we here provide the expression for the centerband up to 12th order in ω_0/ω_r (abbreviations: $K_1 := 3 + \eta^2$ and $K_2 := 1 - \eta^2$):

$$\begin{aligned}
I_0 = 1 & - \frac{K_1^2}{20} \left(\frac{\delta\omega_0}{\omega_r} \right)^2 + \frac{227 K_1^2}{181\,440} \left(\frac{\delta\omega_0}{\omega_r} \right)^4 - \frac{49\,471 K_1^3 + 4\,428 K_2^2}{2\,802\,159\,360} \left(\frac{\delta\omega_0}{\omega_r} \right)^6 + \frac{K_1 (1\,466\,405 K_1^3 - 709\,776 K_2^2)}{9\,146\,248\,151\,040} \left(\frac{\delta\omega_0}{\omega_r} \right)^8 \\
& - \frac{K_1^2 (286\,311\,167 K_1^3 - 494\,915\,400 K_2^2)}{281\,521\,518\,089\,011\,200} \left(\frac{\delta\omega_0}{\omega_r} \right)^{10} \\
& + \frac{998\,271\,153\,509 K_1^6 - 2\,160 K_2^2 (1\,577\,931\,893 K_1^3 + 218\,222\,883 K_2^2)}{209\,789\,835\,279\,931\,146\,240\,000} \left(\frac{\delta\omega_0}{\omega_r} \right)^{12}
\end{aligned}
\tag{22}$$

210 Analogous formulae for all SSB up to fourth order are provided in the Supplement S4.

In comparison with numerical simulations of the SSB intensity, the use of polynomials should be advantageous because of the following reasons:

- Powder averaging is already included in the polynomials! For simulations, the double integration in equation (24) from Herzfeld and Berger (1980) has to be replaced by a sum over the integrand function of pairs of polar and azimuth angles. In a numerical simulation even with advanced methods like REPULSION some 1000 spatial directions are needed usually.
- A single value for the integrand of equation (24) in the Herzfeld-Berger paper has to be calculated as triple sum over products of Bessel functions (equation (25) *ibid*). Its evaluation would take much more time than for a polynomial of 12th order even by using Clenshaw recursion. This leads to a further factor of 10 ... 100 in the comparison of processing times.
- The use of Bessel functions can be circumvented if $|F|^2$ in equation (24) (Herzfeld and Berger, 1980) is replaced by $\exp(i\Phi(t))$ with $\Phi(t)$ given by the long expression (10). The result of subsequent powder averaging is the time-domain signal for which a Fourier analysis is required to get the sideband intensity. This is likewise not required if the polynomial approach is used.

225 Considering that, the time of a polynomial SSB calculation is expected to be shorter by factor in the order of 10^4 compared to a numerical simulation.

A further aspect concerns fitting of model functions:

- Searching minimum χ^2 can be performed analytically if polynomials are used (see below) which is not possible by
230 applying a program or a subroutine;
- furthermore an symbolic expression can often be more effectively embedded into a fitting routine than a program. For example Newton procedure or Levenberg-Marquardt procedure require calculation of first derivatives which can be calculated symbolically for a polynomial.

2.4 Properties of the polynomials

235 We consider it useful to discuss a few properties of the polynomials. Terms with even powers of R are symmetric and thus invariant with respect to change of the sign of the sideband order, while the odd-power terms are skew-symmetric. This can be written as

$$I_{\pm m} = \sum_{n=0}^{\infty} b_{m;2n} R^{2n} \pm K_2 R \cdot \sum_{n=0}^{\infty} b_{m;2n+1} R^{2n} . \quad (23)$$

This property can be used for constructing polynomials which might possess better convergence behavior, namely sums and
240 differences,

$$\begin{aligned} I_m + I_{-m} &= 2 \sum_{n=0}^{\infty} b_{m;2n} R^{2n} \\ I_m - I_{-m} &= 2 K_2 R \cdot \sum_{n=0}^{\infty} b_{m;2n+1} R^{2n} . \end{aligned} \quad (24)$$

The meaning of this substitution is that the properties of anisotropy and asymmetry can be separated almost completely into one of the combinations. A physical rationale is that the difference between the two SSB of first order is the larger, the more asymmetric the static powder pattern is, i.e. for $\eta = 1$, hence $K_2 = 0$ (symmetric static line!) we expect $I_m = I_{-m}$. The axially
245 symmetric tensor ($\eta = 0$, i.e. K_2 maximum) yields the most asymmetric shape, so the difference between these two SSB should be large. Contrarily, the average (or sum) of both is expected to be the larger, the larger is the anisotropy δ . This almost complete separation of the dependencies on δ and η , respectively, is of course not a consequence of this kind of mathematical treatment, but the polynomial formalism enables us to treat and recognize this property very easy.

Specifically, to combine the SSB of first order, we define the quantities $I_+ = (I_1 + I_{-1})/I_0$ and $I_- = (I_1 - I_{-1})/I_0$. By
250 polynomial division we obtain in decimal notation

$$\begin{aligned} I_+ &= 0.044\,444\,44\,w^2 + 0.000\,723\,104\,0\,w^4 + (4.900\,449 \times 10^{-6} - 2.127\,502 \times 10^{-5}q^2)\,w^6 \\ &\quad - (1.156\,835 \times 10^{-7} + 4.384\,854 \times 10^{-7}q^2)\,w^8 - (4.660\,243 \times 10^{-9} - 2.669\,296 \times 10^{-9}q^2)\,w^{10} \\ &\quad - [8.035\,180 \times 10^{-11} - (3.397\,989 \times 10^{-10} + 3.261\,380 \times 10^{-11}q^2)\,q^2]\,w^{12} \end{aligned} \quad (25)$$

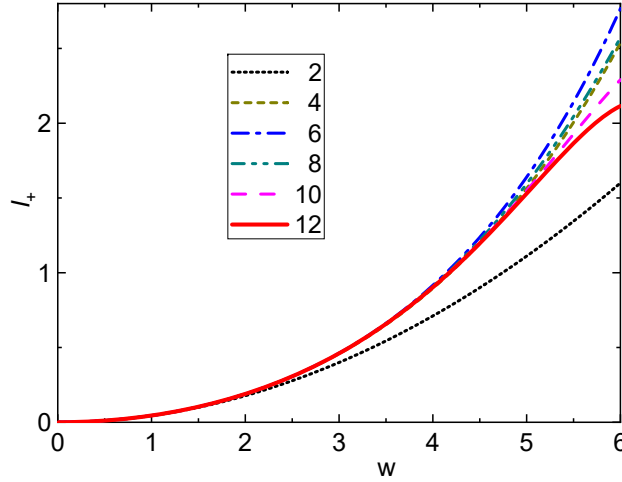


Figure 2. SSB combination I_+ vs. $w = (\omega_0 \delta / \omega_r) \sqrt{3 + \eta^2}$ for $q = 1$ and $\eta = 1$ and different degrees of approximation. The numbers in the legend are the maximum powers of w considered. The curves corresponding to successive orders are alternatively coming closer or farther away from the second-order approximation (parabola) because of alternating signs of terms of different powers. In any case the convergence is very fast up to $w = 5$.

and

$$I_- = -0.019\,047\,62\,q\,w^3 \left[1 + 0.020\,959\,6\,w^2 + 0.000\,181\,331\,w^4 - (2.592\,966 \times 10^{-6} - 2.214\,666 \times 10^{-6}q^2)w^6 - (1.296\,641 \times 10^{-7} - 2.065\,980 \times 10^{-7}q^2)w^8 + O[w]^{10} \right], \quad (26)$$

where the two independent variables have the meaning

$$w := \frac{\omega_0 \delta}{\omega_r} \sqrt{K_1} = \frac{\omega_0 \delta}{\omega_r} \sqrt{3 + \eta^2} \text{ and } q := \frac{K_2}{K_1^{3/2}} = \frac{1 - \eta^2}{(3 + \eta^2)^{3/2}}. \quad (27)$$

The variable w represents the ratio between anisotropy and spinning speed together with an additional η -dependent factor. q represents the tensor asymmetry in a way that $\eta = 0 \rightarrow q = 1/\sqrt{27}$ and $\eta = 1 \rightarrow q = 0$. In this representation, the asymmetry (η) dependence resides almost completely in the prefactor, while the terms in the rectangular brackets vary less than I_+ if the asymmetry varies between its extremes, to be addressed below.

We thus summarize the advantages of such an approach:

1. These combinations depend on the two dimensionless variables w and q , which enables an easy extraction of the tensor parameters (w expresses the ratio of anisotropy and spinning frequency including an η component).
2. Fitting a ratio removes the need for fitting an additional, anyways arbitrary amplitude.

3. The powers of R increase from term to term by 2 instead of 1 as in the case of single SSB, leading to less terms needed
 265 for a sufficiently good approximation. I_+ curves assuming $\eta = 1$ for different degrees of approximation are shown in
 Fig.2, and demonstrate the relevance of higher-order terms for a given value of w . We can conclude that the use of the
 first two terms only (w^4) is a very good approximation up to $w \approx 4$, while terms up to 12th order are required to cover
 $w \leq 5$ even if the coefficients of the last terms are rather small.
4. For not too small ω_r , w dominates in the coefficients over q . Particularly, up to the 5th power in w , the sums also of
 270 the other SSB depend only on K_1 and the differences depend linearly on q (the prefactor), i.e. even for the maximum
 value w for which the 12th-order approximation is well justified ($w \approx 5$), we get $I_+ = 1.518$ for $\eta = 0$ and $I_+ = 1.530$
 for $\eta = 1$, which makes a difference of only 0.8%.

Therefore, the two eqs. (24) provide a means to separate the dependencies on the two invariants. To stress this point, Fig. 3a
 shows I_+ vs. w for a range η values, normalized to its dependence for $\eta = 1$. The variation range, somewhat amplified by the
 275 narrow plotted interval, is less than 1%, thus very small, which confirms item 3. In contrast, I_- features a strong variation with

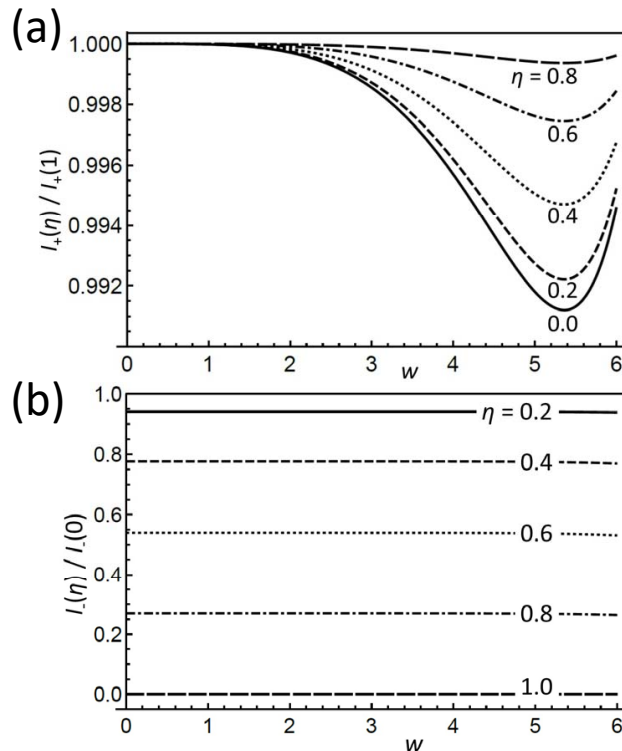


Figure 3. (a) I_+ and (b) I_- for different η , normalized to their values at $\eta = 1$ and $\eta = 0$, respectively, as a function of w . Note the smallness of the differences between the I_+ curves in (a) of different η ; they are less than 1%. Remarkably in (b) is the almost independent ratio between the I_- of different η .

q as well as η . However, looking again at the normalized dependence of I_- on w (where we now need to distinguish positive and negative values) plotted in Fig. 3b, we prove that this dependence is almost completely governed by the prefactor. In other words, η is very sensitively encoded in I_- once w is rather precisely determined from I_+

In summary, two different approaches lend themselves to the analysis of actual data with the aim of extracting δ and η :

- 280 (1) One can include as many as possible SSB, trying to fit K_1 and K_2 by a fit to the SSB intensities including a normalization factor as fit parameter. The tensor invariants are readily obtained by solving the given system of 2 nonlinear equations.
- (2) One can consider only first-order sidebands, check the magnitude of I_+ , then decide which level of approximation has to be used, then calculate w , then q , possibly iteratively until self-consistency.

285 2.5 Derivation of the 6th order polynomials for the 2D syncMAS sidebands

Step 1 (Phase):

For this treatment, two additional frames are needed as compared to the 1D MAS case of an isotropic sample, see Section 2.1.2. As outlined there, we assume uniaxial symmetry around the unique deformation axis (director). Note that the rotor should be packed in such a way that the director is perpendicular to the spinning axis, i.e. $\beta_2 = 90^\circ$. We employ our tensor-based approach to performing the rotation transformations, see also Section 2.1.2. Taking δ_L and δ_M as the column vectors representing the CST in the lab frame and in its main frame, respectively, we arrive at the following series of transformations:

$$\delta_L = \mathbf{R}_y(\vartheta_{MA}) \cdot \mathbf{R}_z(\gamma) \cdot \mathbf{R}_y\left(\frac{\pi}{2}\right) \cdot \mathbf{R}_z(\varphi) \cdot \mathbf{R}_y(\beta) \cdot \mathbf{R}_z(\varepsilon) \cdot \mathbf{R}_y(\alpha) \cdot \mathbf{R}_z(\psi) \cdot \delta_M \quad (28)$$

The instantaneous frequency can now be calculated:

$$\begin{aligned} \omega = \omega_0 \delta \frac{1}{3\sqrt{2}} \{ & -2\sin 2\gamma ([\cos \beta (E_1 \cos \varepsilon + E_2 \sin \varepsilon) - \sin \beta (E_3 \cos 2\varepsilon + E_4 \sin 2\varepsilon)] \cos \varphi \\ & + [\cos 2\beta (E_2 \cos \varepsilon - E_1 \sin \varepsilon) + \frac{1}{2} \sin 2\beta (\sqrt{3}E_5 - E_4 \cos 2\varepsilon + E_3 \sin 2\varepsilon)] \sin \varphi) \\ & + 2\sqrt{2} \cos \gamma ([\cos 2\beta (E_2 \cos \varepsilon - E_1 \sin \varepsilon) + \frac{1}{2} \sin 2\beta (\sqrt{3}E_5 - E_4 \cos 2\varepsilon + E_3 \sin 2\varepsilon)] \cos \varphi \\ & + [-\cos \beta (E_1 \cos \varepsilon + E_2 \sin \varepsilon) + \sin \beta (E_3 \cos 2\varepsilon + E_4 \sin 2\varepsilon)] \sin \varphi) \\ & - 2\sqrt{2} \sin \gamma ([\sin \beta (E_1 \cos \varepsilon + E_2 \sin \varepsilon) + \cos \beta (E_3 \cos 2\varepsilon + E_4 \sin 2\varepsilon)] \cos 2\varphi \\ & + \frac{1}{4} [2\sin 2\beta (E_2 \cos \varepsilon - E_1 \sin \varepsilon) + (3 + \cos 2\beta) (E_4 \cos 2\varepsilon - E_3 \sin 2\varepsilon) + 2\sqrt{3}E_5 \sin^2 \beta] \sin 2\varphi) \\ & + \cos 2\gamma (\frac{1}{4} [(3 + \cos 2\beta) (E_4 \cos 2\varepsilon - E_3 \sin 2\varepsilon) + 2\sin 2\beta (E_2 \cos \varepsilon - E_1 \sin \varepsilon) + 2\sqrt{3}E_5 \sin^2 \beta] \cos 2\varphi \\ & - [\sin \beta (E_1 \cos \varepsilon + E_2 \sin \varepsilon) + \cos \beta (E_3 \cos 2\varepsilon + E_4 \sin 2\varepsilon)] \sin 2\varphi \\ & + \frac{\sqrt{3}}{2} E_5 (3\cos^2 \beta - 1) + \frac{3}{2} [\sin 2\beta (-E_2 \cos \varepsilon + E_1 \sin \varepsilon) + \sin^2 \beta (E_4 \cos 2\varepsilon - E_3 \sin 2\varepsilon)] \} \end{aligned} \quad (29)$$

295 We obtain the phase accumulated from the end of signal excitation ($t = 0$) to time t by time integration:

$$\Phi = \frac{\delta \cdot \omega_0}{\omega_r} \left[(aD_1 + bD_2) \cos \varphi + (bD_1 - aD_2) \sin \varphi + (cD_3 + dD_4) \cos 2\varphi + (dD_3 - cD_4) \sin 2\varphi + \sqrt{3} f D_4 \right] \quad (30)$$

This is again a sum of products of solely t -dependent and of solely orientation-dependent terms. The former are

$$\begin{aligned}
D_1 &= -\frac{\sqrt{2}}{3} \sin \omega_r t_2 \sin (\omega_r t_2 + 2\omega_r t_1 + 2\gamma_{00}) \\
D_2 &= \frac{2}{3} [\sin (\omega_r t_2 + \omega_r t_1 + \gamma_{00}) - \sin (\omega_r t_1 + \gamma_{00})] \\
D_3 &= \frac{2}{3} [\cos (\omega_r t_2 + \omega_r t_1 + \gamma_{00}) - \cos (\omega_r t_1 + \gamma_{00})] \\
D_4 &= \frac{1}{\sqrt{6}} \sin \omega_r t_2 \cos (\omega_r t_2 + 2\omega_r t_1 + 2\gamma_{00})
\end{aligned} \tag{31}$$

300 The latter can be separated further into factors which depend on the three angles φ , β and ε describing the orientation of the molecular segments:

$$\begin{aligned}
a &:= \cos \beta (E_1 \cos \varepsilon + E_2 \sin \varepsilon) - \sin \beta (E_3 \cos 2\varepsilon + E_4 \sin 2\varepsilon) \\
b &:= \cos 2\beta (E_2 \cos \varepsilon - E_1 \sin \varepsilon) + \frac{1}{2} \sin 2\beta (\sqrt{3}E_5 - E_4 \cos 2\varepsilon + E_3 \sin 2\varepsilon) \\
c &:= \sin \beta (E_1 \cos \varepsilon + E_2 \sin \varepsilon) + \cos \beta (E_3 \cos 2\varepsilon + E_4 \sin 2\varepsilon) \\
d &:= \frac{1}{4} \left[2\sin 2\beta (E_2 \cos \varepsilon - E_1 \sin \varepsilon) + (3 + \cos 2\beta) (E_4 \cos 2\varepsilon - E_3 \sin 2\varepsilon) + 2\sqrt{3}E_5 \sin^2 \beta \right] \\
f &:= \frac{\sqrt{3}}{2} E_5 (3\cos^2 \beta - 1) + \frac{3}{2} [\sin 2\beta (-E_2 \cos \varepsilon + E_1 \sin \varepsilon) + \sin^2 \beta (E_4 \cos 2\varepsilon - E_3 \sin 2\varepsilon)]
\end{aligned} \tag{32}$$

Here, the E_i ($i \in \{1..5\}$) (“geometry factors”) contain all information about the orientation of the CST PAF in the molecular frame:

$$\begin{aligned}
E_1 &= -\frac{\eta}{\sqrt{2}} \sin \alpha \sin 2\psi \\
E_2 &= \frac{1}{2\sqrt{2}} \sin 2\alpha [3 - \eta \cos 2\psi] \\
E_3 &= \frac{\eta}{\sqrt{2}} \cos \alpha \sin 2\psi \\
E_4 &= \frac{1}{2\sqrt{2}} [\eta(1 + \cos^2 \alpha) \cos 2\psi + 3\sin^2 \alpha] \\
E_5 &= \frac{\sqrt{3}}{2\sqrt{2}} [(3\cos^2 \alpha - 1) + \eta \sin^2 \alpha \cos 2\psi]
\end{aligned} \tag{33}$$

305 Step 2 (Orientational averaging, here up to $n = 6$)

Orientational averaging of the powers of Φ reads

$$\langle \Phi^n \rangle_{\text{or}} = \frac{1}{8\pi^2} \int_0^{2\pi} d\varphi \int_0^\pi U(\beta) \sin \beta d\beta \int_0^{2\pi} d\varepsilon \Phi^n(\varphi, \beta, \varepsilon), \tag{34}$$

which now includes the non-isotropic, symmetric ODF (assuming equal probability of all ε). The β dependence of Φ^n after φ and ε integration consists of $\cos^2 \beta$ to powers ≤ 6 , which can be written as linear combinations of the Legendre polynomials $P_n(\cos \beta)$ with even $n \leq 12$. Hence, the result of the powder averaging procedure will be a linear combination of the orientational moments $\langle P_2 \rangle$, $\langle P_4 \rangle$, $\langle P_6 \rangle$, $\langle P_8 \rangle$, $\langle P_{10} \rangle$ and $\langle P_{12} \rangle$; see also eqn. (4). Due to the small values which are expected for

$\langle P_{10} \rangle$ and $\langle P_{12} \rangle$, the coefficients assigned to these orientational moments are neglected in the following. The phase powers contain powers and mixed products of the time-dependent terms $D_1..D_4$. Transforming again the trigonometric forms into exponential ones we obtain linear combinations of $e^{im\omega_r t_2} e^{ik\omega_r t_1}$.

315 Step 3 (assembling the FID and Fourier analysis):

Summing up the phase powers to obtain the FID expression corresponding to eqn. (8) and separating the I_{mk} following eqn. (9) gives the complex 2D SSB intensities. All coefficients with odd k actually vanish, which is the mathematical reflection of the fact that MAS rotation by 180° provides an invariant situation when the director is perpendicular to the spinning axis, i.e. $\beta_2 = 90^\circ$. In other words, a full rotation replicates each arrangement twice if the director is perpendicular to the rotor axis (for
320 other sample packing schemes, odd-order sidebands will appear, requiring somewhat more lengthy calculations).

Instead of the complex representation of the SSB intensities, we use the trigonometric representation because here the phase problems can be eliminated in a more efficient way. This will be discussed in detail in the application section. Fourier analysis along t_1 gives

$$I_m(t_1) = \sum_{k=0}^4 [C_{m;2k} \cos(2k\omega_r t_1 + \gamma_{00}) + S_{m;2k} \sin(2k\omega_r t_1 + \gamma_{00})] . \quad (35)$$

325 The trigonometric SSB intensities C_{mk} and S_{mk} can be transformed to the complex ones and vice versa as follows:

$$\begin{aligned} I_{m;2k} + I_{m;-2k} &= C_{m;2k} (k > 0) \\ I_{m0} &= C_{m0} \Rightarrow I_{m;\pm 2k} = \frac{1}{2} (C_{m;2k} \mp i S_{m;2k}) (k > 0) \\ iI_{m;2k} - iI_{m;-2k} &= S_{m;2k} \end{aligned} \quad (36)$$

Both kinds of coefficients contain the same information, however, the trigonometric coefficients include less terms. This arises
330 from the \pm sign which leads to a cancellation of some terms upon addition. This could have the advantage that the intervals between powers are larger and the error in neglecting higher powers above a certain value might be reduced.

The linear dependence of the SSB intensities on the orientational moments mentioned above has the consequence that also C_{mk} and S_{mk} are linear in the orientational moments:

$$C_{mk} = \sum_p C_{m,k,2p} \langle P_{2p} \rangle \quad ; \quad S_{mk} = \sum_p S_{m,k,2p} \langle P_{2p} \rangle \quad (37)$$

335 $C_{m,k,2p}$ and $S_{m,k,2p}$ depend on δ , η and the two angles α and ψ (which are the spherical coordinates of the molecular vector in the CST PAF, see above). Analytical expressions for them are listed for some low m and k in Supplement S5.

3 Experiments

All NMR experiments were performed on a BRUKER AVANCE III spectrometer with magnetic flux density of 9.35 T, i.e. resonance frequencies of 400 MHz and 100 MHz for protons and ^{13}C spins, respectively. We used a cross-polarization time of 2 ms; the spinning speed was varied between 2 and 11 kHz for the 1D experiments, and set to 5,500 Hz in the 2D experiments. The $\pi/2$ pulses had a duration of $3.12\ \mu\text{s}$ corresponding to a nutation frequency of 80 kHz at both channels. For proton decoupling, rf power has been chosen likewise to 80 kHz. As explained above, weak variations of the SSB intensities can lead to appreciable changes of the tensor parameter values calculated from that. Therefore, for an excellent signal-to-noise ratio of the 1D spectra of polycarbonate, 20,000 scans were recorded. Recycling delays of 2 s and 5 s were used in the case of polycarbonate and glycine, respectively.

A sample of polycarbonate (PC) (Makrolon GP clear 099 from Bayer) was stretched in the glassy state to an elongation factor of 1.45. In this process, the segments of the chains are expected to align. The sample was placed into a 4 mm BRUKER MAS rotor in such way that the stretching direction was perpendicular to the rotor axis. For the 2D syncMAS experiments, t_1 was incremented in steps of $T_r/16$ over a full period T_r . Even though the interval between 0 and $T_r/2$ contains all information, the use of a full period improves the signal at a level which corresponds to twice number of scans in a half period. For each t_1 increment, 2200 scans were accumulated.

4 Applications of the polynomial approach

4.1 Tensor parameters from MAS SSB

Next, we describe a practical test of the polynomial expansion of SSB intensities to extract actual tensor parameters, and illustrate an effective procedure to reach this aim. We use glycine as an example and focus on the normalized sum and difference of the first-order SSB intensities relative to that of the centerband, I_+ and I_- , respectively. Fig. 4 shows the variation of I_+ with the rotor period T_r , i.e., the inverse of the variable spinning frequency. The largest value amounts to about 1.2. As shown in Figs. 2, this corresponds to $w < 4.5$ hence the 12th order approximation can be applied without compromise in accuracy from the theory side. With the given Larmor frequency of 100.6 MHz we obtain $\delta^2(3 + \eta^2) = (2.165 \pm 0.01) \times 10^{-8}$.

The corresponding I_- values give $q = (-6.1 \pm 2) \times 10^{-3}$. The apparently large relative uncertainty should be judged in proportion to the possible range $0 \leq q \leq 1/27 = 37 \times 10^{-3}$. The negative sign of q means that δ is negative, i.e. that eigenvalue having the largest deviation from δ_{iso} is at lower CS (upfield-shifted, towards the right end of the spectrum).

Results for both carbon resonances of glycine are compiled in Table 1. For COO the agreement with the literature values is very satisfactory, in particular for η . The values for CH_2 deviate more on a relative scale; possible reasons are (i) that the spinning speed was optimized for investigation of COO, leading to small SSB intensities for CH_2 with its much narrower tensor, and (ii) that the dipolar coupling to ^{14}N is not completely averaged by MAS because of the quadrupolar interaction, the

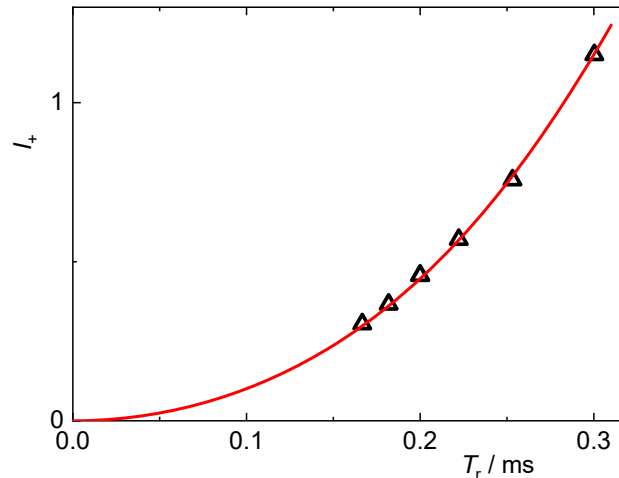


Figure 4. I_+ vs. rotation period T_r for the COO resonance of glycine; triangles: data from experiments with different spinning speeds; red curve: Best fit of the I_+ polynomial to the experimental data.

Table 1. CS tensor parameters of glycine obtained by the polynomial procedure and comparison with literature values (Griffin et al., 1975; Haberkorn et al., 1981)

Group	δ/ppm	η
COO measured	-74.1 ± 0.8	0.98 ± 0.02
literature value	-70.65 ± 1	0.97
CH ₂ measured	23.46 ± 0.25	0.60 ± 0.03
literature value	20 ± 1	0.94

contribution of which could be separated in the static single-crystal experiments of Griffin et al. (1975). ~~The cross-polarization time was 1 ms which appears sufficiently to avoid some bias of the isotropic powder average, especially in a proton-rich environment.~~

4.2 Segmental orientation from syncMAS

We now turn to a demonstration of our approach in analyzing syncMAS data to extract molecular orientations in a uniaxially oriented sample. We first address the chosen sample and the polymer-physical background shortly and present ^{13}C spectra together with the signal assignment in Section 3.2.1, and address the CST parameters in Section 3.2.2. The actual processing and analyses of 2D syncMAS data are covered in the following sections, where Section 3.2.3 addresses phase distortions in the 2D experiment, Section 3.2.4 summarizes the result of Fourier analysis in the indirect dimension, Section 3.2.5 discusses the

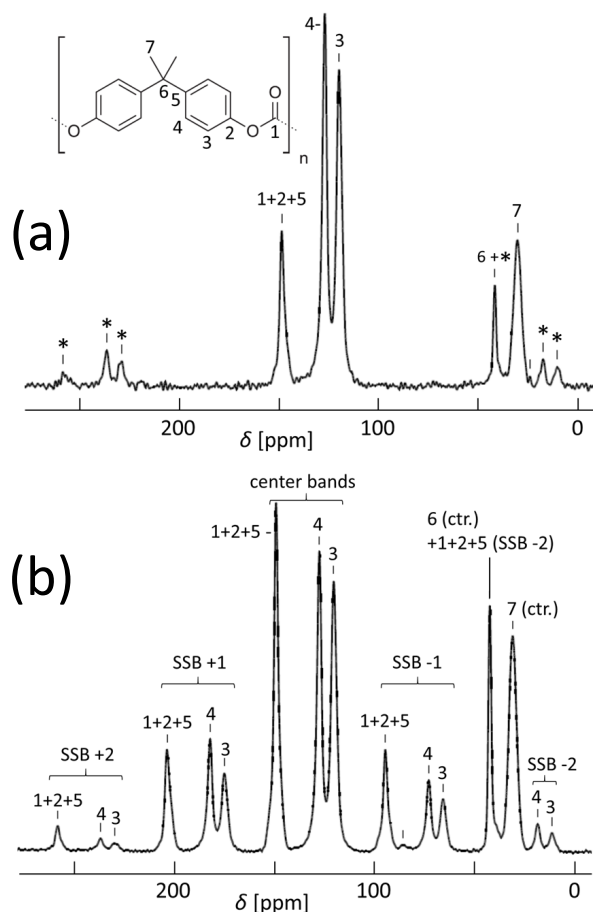


Figure 5. ^{13}C CP MAS spectra of an isotropic PC sample with (a) 11 kHz and (b) 5.5 kHz spinning; for the resonance assignment see Williams et al. (1977). SSBs are marked by asterisks. The spectrum in (b) was taken with 20,000 scans.

ambiguities related to PAF *vs.* molecular-frame orientations, and Section 3.2.6 finally provides the orientational moments and a discussion.

380 4.2.1 Background and ^{13}C CP MAS spectra

To illustrate the use of our approach to estimate orientational order in a practically relevant case, we turn to ~~a polycarbonate~~
~~the stretched polycarbonate~~ (PC) sample ~~(Makrolon GP clear 099 from Bayer) which was stretched in the glassy state~~
~~to an elongation factor of 1.45. In this process, the segments of the chains are expected to align.~~ In an early application
of 2D syncMAS to a similar sample polymer (Vogt et al., 1990), an order parameter $\langle P_2 \rangle$ of about 0.15 was reported for
385 the methyl resonance at elongation. In more detailed work focusing on static 2D experiments of ^{13}C -labeled PC (Utz et al.,

1999), a different deformation geometry and a different angle convention for the director reference frame was used, rendering a comparison not straightforward. Here, we do not elaborate on the polymer physics details and merely use this sample for a proof of principle of the method.

In the earlier work (Vogt et al., 1990), only results for the methyl resonance were reported, and no compelling reason was given with regards to why the other resonances were not evaluated. This was probably due to the limited spinning speed and a corresponding lack of resolution. Moreover, the data analysis approach employing a fit using precalculated subspectra to extract the orientation degree (Harbison et al., 1987) implies fixed assumptions on the relation of the CST PAF and the director frame, which were probably not available for the other resonances. One key advantage of our approach is its flexibility to change the CSA principle values and the related angles at no additional expense in calculation efficiency.

As to experimental details (Djukic et al., 2020), we carefully avoided orientation effects from the injection molding procedure of the specimen via machining off the surface layer, and using precise video control of the true strain. A cylindrical piece of 3 mm outer diameter was cut with a dissecting knife from the center of the stretched specimen and inserted into a 4 mm MAS rotor such that the stretching direction was placed along the radius of the rotor. For the determination of the CSA principal values, an unstretched sample was powdered in order to fully remove possible anisotropy from the molding process, and compressed into a rotor. The cross-polarization (CP) MAS spectrum at 11 kHz spinning is shown in Fig. 5a.

For syncMAS, resolved spectral lines with unique assignments are needed. This is the case for the aromatic CH groups (C3 and C4 in Fig. 5a), but the carbonate (CO_3 , C1) and both quaternary aromatic carbons (C_q , C2 and C5) are almost fully superimposed. Here only an approximate analysis of the combined signal is possible. As to the methyl group (CH_3 , C7), we have sufficient SSB intensity only when the spinning speed is rather low, then leading to potential overlap with the more numerous aromatic SSBs. This can be seen even in Fig. 5 of Vogt et al. (1990), which shows PC spectrum at a spinning speed which is sufficient to have both CH_3 and C_q SSB, however, the separation between the SSB seems insufficient for truly precise analysis. In our hands, a spinning frequency of 5.5 kHz was the best compromise for a joint analysis, see Fig. 5b.

4.2.2 Tensor parameters in PC

The availability of precise CST components and their orientation of the resonances of PC is not optimal; only for the CO_3 and one of the C_q (C2) data are available (Robyr et al., 1998; Utz et al., 1999). In Table 2 we summarize all CST data which were used for the calculation of orientational moments below.

The orientation of the PAF in the molecular frame cannot be deduced from the methods discussed in this work. We assume that the eigenvalues follow the usual assignment for aromatic carbons, i.e., the axis related to largest eigenvalue (lowest shielding) is parallel to the C–H bond, the axis related to the intermediate eigenvalue is perpendicular to C–H and in the ring plane, and the axis related to the lowest eigenvalue (largest shielding) is perpendicular to the ring plane. Possible deviations from these orientations are commonly reported to be in the range of a few degrees only and are thus neglected. The numbering of the axes, however, depends on the sign of δ corresponding to the convention mentioned above: For $\delta < 0$, x_3 is related to the lowest eigenvalue and x_1 is related to the largest eigenvalue, i.e. $x_3 \perp$ ring and $x_1 \parallel$ C–H. For $\delta > 0$, these axes have to be exchanged, see Fig. 6.

Table 2. CST parameters of all ^{13}C positions in PC. The data for C1 and C2 are from Robyr et al. (1998). Those for C3, C4, C5 and C7 were obtained by the polynomial procedure. For C5, a decomposition procedure was applied (see text). Column C5' contains CST data of C5 but obtained by mutual exchange of x_1 and x_3 axes. In all cases the eigenvalues are calculated from δ_{iso} , δ and η .

Parameter	C1	C2	C3	C4	C5	C5'	C7
δ_{iso}	147.1	148.3	120.5	127.7	149.3 \pm 1.5	149.3 \pm 1.5	31 \pm 2
δ/ppm	89	92	-93.7 \pm 1	-103.8 \pm 1	-106.4 \pm 3.6	78.5 \pm 1.4	-34 \pm 5
η	0.39	0.54	0.367 \pm 0.04	0.407 \pm 0.025	0.47 \pm 0.08	1.73 \pm 1.5	0.5 \pm 0.2
δ_{11}/ppm	84.9	77.9	184.5 \pm 2	200.6 \pm 1.5	227.5 \pm 3.5	42.9	56.5 \pm 4.5
δ_{22}/ppm	120.1	127.2	150.2 \pm 1.9	158.4 \pm 1.3	177.5 \pm 3.5	177.5	39.5 \pm 4.5
δ_{33}/ppm	236.4	239.9	26.8 \pm 1	23.8 \pm 1	42.9 \pm 4.5	227.5	-3 \pm 5.5

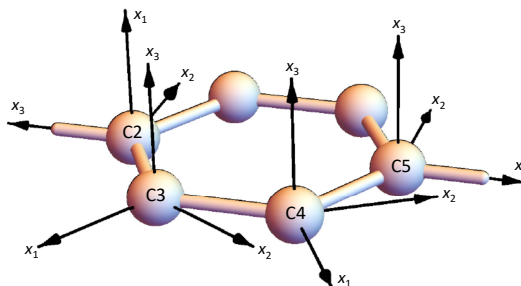


Figure 6. Orientation of the ^{13}C CST PAFs in the benzene ring (C3,4 are C–H and C2,5 are the *para*-substituted C_q). The orientation of the C5 PAF corresponds to the convention mentioned above; for the alternative orientation, x_1 axis and x_3 axis had to be exchanged.

Unfortunately, the resonances of C1, C2, and C5 are not resolved but rather almost fully overlapped. These positions, however, play an important role in the data analysis of the syncMAS experiments. If the CST of all three positions were known, the syncMAS signals could be calculated as superposition of the three curves. For both C1 and C2, the CST eigenvalues are known from experiments on selectively ^{13}C -labeled samples: $\delta = 89$ ppm, $\eta = 0.39$ for C1 and $\delta = 92$ ppm, $\eta = 0.54$ for C2 (Utz et al., 1999). Hence, the missing CST of C5 (one of the C_q) can be estimated if the SSB pattern of the line at 150 ppm is considered as linear combination of the SSB patterns of one C1, two C2 and two C5 per monomer unit:

$$I_m = \frac{p I_m^{\text{C1}} + 2 I_m^{\text{C2}} + 2 I_m^{\text{C5}}}{p + 4} \quad (38)$$

This equation permits the calculation of the SSB pattern of C5, where p describes the relative CP efficiency of $^{13}\text{CO}_3$, which is expected to be lower than that of C2 and C5 because of a larger distance of C1 to any protons as compared with C2 and C5 (thus, $0 < p \leq 1$). For C2 and C5, the next protons are those directly bound to C3 and C4, respectively, which are two bonds apart from C2 and C5. Therefore the CP efficiencies of C2 and C5 were assumed to be equal. The summed square deviation

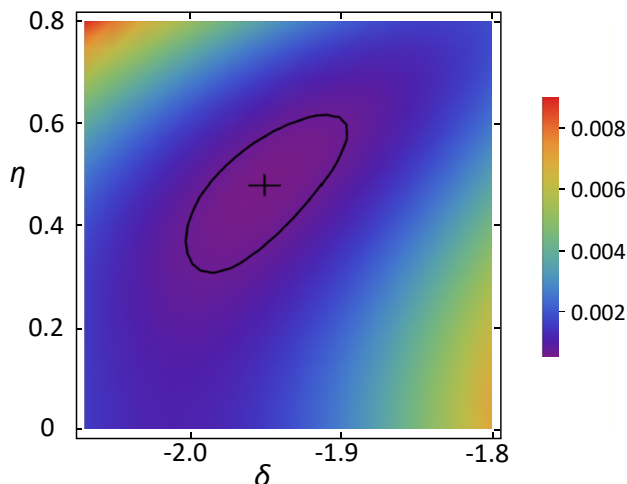


Figure 7. χ^2 vs. anisotropy and asymmetry parameters of C5 for $p = 0.5$. The cross marks the minimum position; the solid line shows the confidence region.

χ^2 between measured and best-fit SSB intensities has a minimum at $p \approx 0.5$. Fig. 7 shows a 2D χ^2 map vs. anisotropy and asymmetry parameter using the so-estimated $p = 0.5$. With the polynomial method we obtained for carbon position C5: $\delta = (-106.6 \pm 4)$ ppm and $\eta = 0.48 \pm 0.08$. These values depend only weakly on p ; the error intervals include this already.

Returning to the PAF orientations, see again Fig. 6, x_3 denotes the most-shielded direction (along the ring normal) and x_1 the least-shielded one (along the C–H bond). This numbering is in agreement with the definitions from Section 2.1.1 as long as the anisotropy is positive. In the case of C5, however, $\delta < 0$. This means that the most-shielded direction is now that direction which belongs to that CST eigenvalue which deviates mostly from δ_{iso} . Following the definition from above, x_1 and x_3 had to exchange their directions. For the evaluation of the syncMAS data, however, it would be advantageous if both C2 and C5 were placed in a common frame. Then, for roughly 4/5 of the intensity of this valuable signal, we have reliable CST values and orientations, and small uncertainties related to the CO_3 resonance will not matter much. If the PAF of C2 is used also for C5, anisotropy and asymmetry parameter of C5 change to $\delta = (78.2 \pm 1)$ ppm and $\eta = 1.71 \pm 0.15$. We use these values in the following. The unusual value of η is a consequence of the exchange of axes. One can of course easily check that the CST invariants as well as the eigenvalues are not influenced.

4.2.3 Fourier transform and 2D phase distortion

The relevant practical problem that is only partially described in the leading reference (Harbison et al., 1987) is the linear phase distortion along the indirect frequency dimension ω_1 arising from the unknown angle γ_{00} between the sample director and the rotor position that triggers the start of the pulse sequence in the case of $t_1 = 0$. This phase distortion superimposes with the “normal” phase shifts arising from quadrature detection and the pre-acquisition delay. Utmost stability of the spectrometer over the long-lasting experiment is required to resolve the related issues. This concerns in particular the signal excitation (CP

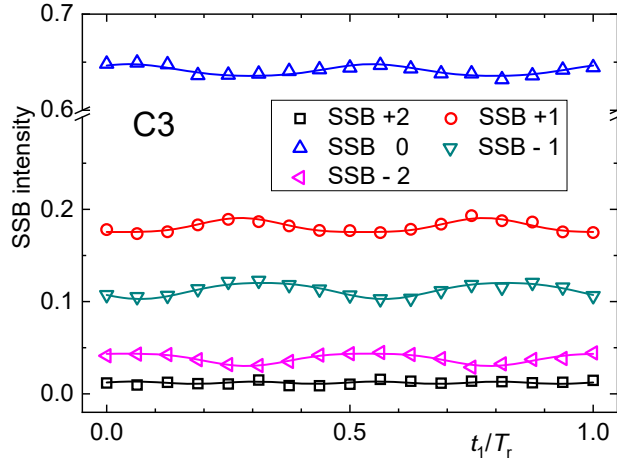


Figure 8. SSB oscillations along t_1 of carbon C3.

conditions). It is thus advisable to run a series of identical 2D syncMAS spectra and sum them up to reduce the effects of spectrometer drift along t_1 . In addition, one can check the stability *via* the following a combination of SSB which is almost independent of t_1 . We tried to find such a combination for C4 by variation of prefactors of the corresponding polynomials. The best possibility is

$$0.8819 \cdot I_2 + 1.0121 \cdot I_1 + I_0 + 0.5609 \cdot I_{-1} + 0.8761 \cdot I_{-2} \quad (39)$$

This quantity should be constant within 0.1% across the different t_1 increments. No change of intensity could be detected within the limits of experimental uncertainty.

Referring to eqn. (35), the SSB intensities oscillate with t_1 . This is valid for the real as well as for the imaginary parts of the spectra. For the special case of the director being perpendicular to the rotor axis, the 2D FID can be written as

$$FID(t_1, t_2) = \sum_{m,k} I_{mk} \exp[2k\omega_r(t_1 - t_0)] \cdot \exp \left[i \left((m\omega_r t_2) + \varphi(\omega_2) \right) \right] \cdot R(t_2), \quad (40)$$

where $\varphi(\omega_2)$ is the phase distortion (constant, linear, ...) in the direct dimension, $R(t_2)$ denotes signal damping during acquisition and t_0 is the unknown delay corresponding to γ_{00} . The term $-2k\omega_r t_0$ corresponds to a linear phase distortion along ω_1 . Both distortions sum up to a total phase distortion of $\varphi(\omega_2) - 2k\omega_r t_0$. They were separated *via* a procedure described in the following.

Performing only an FT along direct dimension, we obtain spectra $Sp(t_1, \omega_2)$ with absorptive (A) and dispersive (D) spectral components of the centerband and the SSBs, whose overall intensities oscillate along indirect dimension:

$$Sp(t_1, \omega_2) = e^{i\varphi(\omega_2)} \sum_k \{ A \cdot C_{mk} \cos 2k\omega_r(t_1 - t_0) - D \cdot S_{mk} \sin 2k\omega_r(t_1 - t_0) + i [D \cdot C_{mk} \cos 2k\omega_r(t_1 - t_0) + A \cdot S_{mk} \sin 2k\omega_r(t_1 - t_0)] \} \quad (41)$$

This means that for a general value of t_1 an apparent phase distortion is detected because of an inevitable mixing of sin and cos terms already without $\varphi(\omega_2)$. Because of variations of the C_{mk} and S_{mk} , we will thus have different phase distortions already from signal to signal within each 1D spectrum! An exception is $t_1 - t_0 = n \cdot T_r/2$, because here the sin terms vanish.

470 A simple if not simplistic and laborious solution is to phase each signal of each slice separately and thus evaluate its intensity as a function of t_1 . This procedure is only possible for sufficiently resolved spectral peaks and when neighboring peaks do not differ strongly in their phase. Results of such analyses are exemplarily shown in Fig. 8. The oscillations can then be fitted with a combination of sine and cosine dependencies to determine the prefactors of the different harmonics, but a close look at eqn. (41) reveals that an extraction of the C_{mk} and S_{mk} is nearly impossible, because the absorptive and dispersive components of
475 the spectra along ω_2 have been mixed. Therefore, the shown oscillations merely give a qualitative impression of the orientation degree in the sample, and a quantitative analysis is possibly only *via* a brute-force numerical approach.

A separation of both phase contributions is possible, provided that the t_1 incrementation is equidistant with N values over one rotation period T_r ($t_1 = i T_r/2^n$ with $i = 0 \dots 2^n$; $2^n=16$ in our case). Upon summation of all spectra, only terms without trigonometric functions survive:

$$480 \quad G_0(\omega_2) = \sum_{n=0}^{N-1} Sp\left(\frac{nT_r}{N}, \omega_2\right) = e^{i\varphi(\omega_2)} (A + i D) C_{m0} . \quad (42)$$

Eqn. (42) represents a 1D spectrum that is distorted solely by phase shifts along the direct dimension, hence, the appropriate parameters needed for phase correction can be determined on this basis only. This spectrum is shown as the bottom trace of Fig. 9. Subsequently all individual spectra obtained by the first FT can be corrected by these parameters, and phase distortions left in the spectra are only those arising from t_0 . It is important to stress that this sum is not identical to the spectrum of the

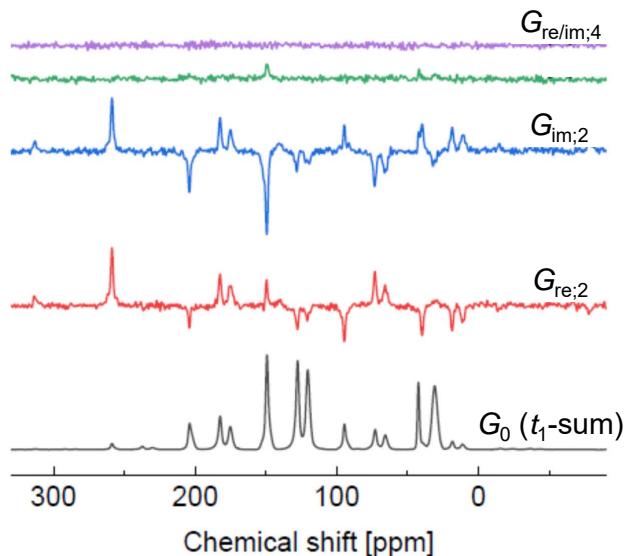


Figure 9. Spectra along ω_2 (in ppm) encoding the t_1 Fourier coefficients as indicated. The lowest spectrum is the sum of all slices in t_1 .

485 isotropic sample. Instead, it also depends on the orientational moments, see the corresponding equations in Supplement S5. The reason is that the summation is an azimuthal average over the rotor positions upon signal excitation; for an isotropic powder average, some sample orientations would be needed which cannot be reached by this uniaxial sample rotation.

4.2.4 Obtaining C_{mk} and S_{mk} by Fourier analysis in the indirect dimension

Conventional 2D FT is possible after applying the phase correction from the sum spectrum to all ω_2 slices along t_1 (Harbison et al., 1987). But then only two slices will be close to having only absorptive lineshapes, one of which can be taken as the $t_1 = 0$ slice via a roll-over of the time axis. However, identifying this one may be ambiguous with limited data quality, and one may not have a spectrum at exactly that condition. Only then would a purely first-order (frequency-dependent) phase correction along ω_1 provide absorptive spectral lines. Still then, an additional ambiguity with regards to the sign of the higher-order sidebands arises, requiring the testing of different possibilities. In our hands, an alternative approach proved more feasible.

495 We suggest performing Fourier analysis separately for the real and imaginary parts of the result of the first FT along t_2 . Under the given conditions, only even-numbered Fourier coefficients do not vanish. The ω_2 -dependent Fourier coefficients of order $2k$ ($k \in \mathbb{N}$) of the intermediate spectra are

$$\begin{aligned} G_{\text{re},2k}(\omega_2) &= \frac{1}{\pi} \int_0^{2\pi} \text{Re}\{S(t_1, \omega_2)\} \exp\{2ik\omega_r t_1\} d(\omega_r t_1) = [A(\omega_2)C_{mk} - i D(\omega_2)S_{mk}] e^{2ik\omega_r t_0} \\ G_{\text{im},2k}(\omega_2) &= \frac{1}{\pi} \int_0^{2\pi} \text{Im}\{S(t_1, \omega_2)\} \exp\{2ik\omega_r t_1\} d(\omega_r t_1) = [D(\omega_2)C_{mk} + i A(\omega_2)S_{mk}] e^{2ik\omega_r t_0} . \end{aligned} \quad (43)$$

The new set of spectra $G_{\text{re;im},2k}(\omega_2)$ can be phased now; the correction angle of $-2k\omega_r t_0$ for $G_{\text{re},2k}(\omega_2)$ is constant with respect to ω_2 , so one can apply the usual criterion of an as-absorptive-as-possible spectrum. The real part of a corrected spectrum contains the C_{mk} as prefactors of $A(\omega_2)$. Phasing of $G_{\text{im},2k}(\omega_2)$ by the same angle yields an absorptive signal in the imaginary part with S_{mk} as prefactors. This is demonstrated for the higher Fourier coefficient spectra for $k = 0, 2$ and 4 shown in Fig. 9. As already noted by Harbison et al. (1987), appearance of significant intensities in the spectra of order k implies the relevance of orientational moments of similar order.

505 The peak intensities (integrals, heights) in these spectra can be identified with our exact solution for the sideband intensities, specifically, they can be used to estimate the C_{mk} and S_{mk} :

$$\frac{C_{mk}}{C_{00}} = \frac{\text{Re}\{G_{\text{re},2k}(\delta_{\text{iso}} + m\omega_r)\}}{\text{Re}\{G_0(\delta_{\text{iso}})\}} \frac{\text{Re}\{G_{\text{re},2k}(\delta_{\text{iso}} + m\omega_r)\}}{\text{Re}\{G_0(\delta_{\text{iso}})\}} ; \quad \frac{S_{mk}}{C_{00}} = \frac{\text{Im}\{G_{\text{im},2k}(\delta_{\text{iso}} + m\omega_r)\}}{\text{Re}\{G_0(\delta_{\text{iso}})\}} \frac{\text{Im}\{G_{\text{im},2k}(\delta_{\text{iso}} + m\omega_r)\}}{\text{Re}\{G_0(\delta_{\text{iso}})\}} . \quad (44)$$

The best values are those for $2k = 2$ (C_{m0} have better S/N, but for the estimation of the orientational moments their difference to the isotropic SSB intensities have to be used, which are rather small). The possibility to extract higher orientational moments from the C_{mk} and S_{mk} by fitting depends on their accuracy and the availability of higher sideband orders. The full set of Fourier coefficients extracted from our syncMAS experiment on oriented PC is provided in Supplement S6.

4.2.5 Segment vector and CS tensor orientation

The theoretical considerations above are based on the assumption that all structural elements and therefore also all CST PAFs have a uniaxial distribution around the axis of the director frame; we used an isotropic average for the angle ε . Therefore, we have to be careful with regards to its definition on the segmental (monomer) level. Vogt et al. (1990) define the direction of the segment vector as being perpendicular to the $\text{H}_3\text{C}-\text{C}-\text{CH}_3$ plane. This will be used here only for the description of the orientation of this moiety, i.e., for the analysis of the results measured for the CH_3 resonance. For the other parts of the monomer this is of little benefit, because the intramolecular angles between this direction and other bonds are not known with sufficient accuracy.

Instead, for the other groups we use the connection line of the two ester oxygens of the carbonate group (C1). For the chemical environment of this position, reliable structural data were published by Utz et al. (1999). These authors indeed detected a distribution of tilt and torsion angles, so we used the averages for our purpose. These agree well with the results of SAXS experiments on crystalline diphenyl carbonate (King and Bryant, 1993). We considered also the latter results because they can be assumed to deviate only little from PC in the vicinity of the CO_3 group. From the data of both papers we estimated values for the relevant bond angles. For our data evaluation we used following values. The ring is tilted by 17.6° against the segmental vector (defining the “ring long axis”, i.e., the connection line of the *para*-substituted carbons); the torsional angle around this axis is 53.2° .

4.2.6 Orientational moments

Following eqn. (37), the multilinear dependence of the oscillation coefficients on the orientational moments is used for a multilinear regression procedure. All used experimental data are collected in the vector \mathbf{Y} , the orientational moments $\langle P_2 \rangle, \langle P_4 \rangle, \langle P_6 \rangle, \langle P_8 \rangle$ form the vector \mathbf{P} and the coefficients $C_{m,k,2p}$ and $S_{m,k,2p}$ are elements of a matrix \mathbf{X} with as many columns as orientational moments included, and rows determined by the available data. Eqn. (37) then reads

$$\mathbf{Y} = \mathbf{X} \cdot \mathbf{P} . \quad (45)$$

The target quantity for optimization, i.e., the minimized sum square deviation (χ^2) is given by

$$\mathbf{P}_{\min} := \underset{\mathbf{P} \in \mathbb{R}^N}{\operatorname{argmin}} [\mathbf{Y} - \mathbf{X} \cdot \mathbf{P}]^2 = [\mathbf{X}^T \cdot \mathbf{X}]^{-1} \cdot \mathbf{X}^T \cdot \mathbf{Y} . \quad (46)$$

In order to avoid the situation that a good fit is achieved by a too large number of physically irrelevant fitting parameters, we proceeded as follows. In the first step, only $\langle P_2 \rangle$ was used. If the variance of this result $\chi^2 = [\mathbf{Y} - \mathbf{X} \cdot \mathbf{P}]^2$ was exceeding the sum of squared experimental uncertainties $(\Delta \mathbf{Y})^2$, $\langle P_4 \rangle$ was added to the result vector \mathbf{P} , and so on. The results can be found in Table 3. The confidence intervals are determined as the variation of \mathbf{P} which doubles the variance. The second to last column in Table 3 is the noise-related sum squared uncertainty of ~~10 SSB intensities considered~~ the C_{m2} and S_{m2} considered ($m \in \{-2, -1, 0, 1, 2\}$). Only for the C1+C2+C5 combined signal does χ^2 from the best fit exceed this value significantly. This may be an indication of our incomplete knowledge on the geometric parameters of the involved resonances.

Table 3. Orientational moments of PC stretched by a factor of 1.45 as obtained from our analyses and indicators of fitting quality.

Position	$\langle P_2 \rangle$	$\langle P_4 \rangle$	$\frac{10\Delta T^2(\Delta Y)^2}{\chi^2}$	χ^2
C1 + C2 + C5	0.234±0.04	-0.187±0.12	1.0×10^{-5}	4.5×10^{-5}
C3	0.21±0.05	–	1.2×10^{-5}	$8.9 \times 10^{-5} \times 10^{-6}$
C4	0.27±0.1	–	1.2×10^{-5}	$11.1 \times 10^{-5} \times 10^{-6}$
C7: $\psi=0$	0.22±0.08	-0.76±0.4	1.8×10^{-5}	2.5×10^{-5}
C7: $\psi=90^\circ$	0.100±0.024	-0.065±0.01	1.8×10^{-5}	1.4×10^{-5}

The I_{mk} or alternatively the C_{mk} and S_{mk} suffer from the ambiguity that the addition of $T_r/2$ to t_0 and sign inversion of all I_{mk} , S_{mk} and C_{mk} with odd k lead to the same FID. This is related to the unknown linear phase correction along ω_1 . Within this experiment, there is no possibility to distinguish between the two situations. This means that one has to do two final fits, one with all C_{mk} and S_{mk} inverted for odd k . If one of these two cases leads to a physically implausible result, then this can be used to identify the incorrect alternative. We have chosen the possibility which yields a positive orientational moment $\langle P_2 \rangle$ for the C1+C2+C5 combined signal.

The results for the protonated carbons have a somewhat larger uncertainty. This might arise from their sensitivity to small changes of the angle of rotation of rings around their long axis. Even though the angle was varied during data evaluation, χ^2 remained at a level which is appreciably higher than the noise-related uncertainty. Moreover, $\langle P_4 \rangle$ variations lead to a rather small increase of χ^2 ; hence, these values are not shown in Table 3.

We observe a rather gratifying correspondence of the results obtained for the aromatic resonances, including the ones that overlap with the C1 (the CO_3 group). For an interpretation of these results, we remind that these orientation degrees correspond to a hypothetical segmental long axis, with respect to which we have positioned the CST PAFs (see the preceding subsection). This axis is defined to be the connection vector of the ester oxygens of the CO_3 group. Our values for are $\langle P_2 \rangle$ on average even somewhat higher than the value of about 0.15 published by Vogt et al. (1990), but a detailed comparison is difficult because of the potential methodological issues of this work (see also below), and because of the different director frames used. In all, we note that our result is of the same order of magnitude, thus providing good confirmation of our efficient and (we hope) transparent approach to the data analysis. A notable and robust result is the comparably large and negative value of $\langle P_4 \rangle$ for two of our resonances. Our approach thus allows us to extract more information than achieved previously.

The state of the art concerning orientation effects in strained glassy PC was presented by Utz et al. (1999), as they have extracted the full ODF expanded in terms of up to 20 expansion coefficients from dedicated ^{13}C static 2D experiments combined with isotope labeling. As already noted, a direct comparison with their results is difficult because of the different deformation geometry and the different angle conventions (essentially a rotation by 90°). Details will be deferred to a future publication. We can merely note that if we just consider a factor of -2 applied to their data to account for the 90° rotation of the reference frame, their results for the second- and fourth-order expansion coefficients are of the same sign and magnitude as our $\langle P_2 \rangle$ and

$\langle P_4 \rangle$. As shown in their ODF, the negative $\langle P_4 \rangle$ may be related to a population of main-chain segments oriented almost perpendicular to the stretching axis. Further systematic studies, enabled by our more efficient approach applicable to non-labeled samples, are planned.

For the CH_3 group we note a rather large uncertainty, which arises naturally from the comparably small SSB intensities; only $\langle P_2 \rangle$ could be estimated with sufficient accuracy. It is not possible to use a smaller spinning speed because of inevitable superpositions with SSBs of other resonances. The accuracy of the oscillation coefficients must be high; otherwise, the uncertainties of the orientational moments become unacceptable. We wonder at this point how spectra like the ones published by Vogt et al. (1990) could be analyzed at all. A precise evaluation would require a rather involved algorithm performing the separation of the many overlapping, differently phased signals, but no comments along this line can be taken from that paper. One straightforward ambiguity relates to the unknown orientations of the δ_{11} and δ_{22} eigenvalues, one of which points along the segmental direction. Results for both options are provided. In all, smaller and more ambiguous CH_3 -based values suggest that the segment vector definition used here is more convenient than the one using the normal of the dimethyl plane; the latter seems to exhibit more disorder.

5 Conclusions

In summary, we could show that our polynomial approximation of MAS spinning sideband intensities provides an efficient approach to extracting chemical-shift tensor elements, with an accuracy that can match dedicated single-crystal experiments or the measurement of static powder lineshapes in single-site isotope-labeled compounds. It is stressed that the approach provides in principle arbitrary accuracy and no specific numerical procedures (such as finite-step integrations). We have provided so far unreported tensor parameters for selected aromatic ^{13}C resonances of polycarbonate.

The approach is particularly suited for the determination of orientation degrees in anisotropic samples from spinning sidebands taken from 2D syncMAS spectra. Here, a number of so far underestimated fundamental problems was addressed, on the one hand related to phase distortions inherent to the syncMAS method, and on the other hand related to the tensor orientations in the studied sample, i.e., stretched polycarbonate. Based on our polynomial approximation considering terms up to the 6th power in $\delta\omega_0/\omega_r$, we could confirm the results from previous studies of chain orientation in this polymer, but could also provide a critical perspective and the need for further studies, possibly using isotope-labeled samples to confirm some of the necessary assumptions.

Author contributions. GH designed the research, performed theoretical derivations, experiments and analyses and wrote the paper. KS discussed results and wrote the paper. PS and DRL designed the research concerning orientation effects in stretched polymer glasses, provided the sample and discussed results.

Data availability. Experimental data are available upon request from the corresponding author.

Competing interests. The authors declare no competing interests.

References

- deAzevedo, E. R., Hu, W. G., Bonagamba, T. J., and Schmidt-Rohr, K.: Principles of centerband-only detection of exchange in solid-state nuclear magnetic resonance, and extension to four-time centerband-only detection of exchange, *Journal of Chemical Physics*, 112, 8988–9001, <https://doi.org/10.1063/1.481511>, 2000.
- Djukic, S., Bocahut, A., Bikard, J., and Long, D. R.: Study of Damage Mechanisms of Amorphous and Low Semicrystalline Polymers under Tensile Deformation by Ultrasmall-Angle X-ray Scattering, *Macromolecules*, 53, 5538–5559, <https://doi.org/10.1021/acs.macromol.0c00534>, 2020.
- Duer, M. J., ed.: *Solid-State NMR Spectroscopy: Principles and Applications*, Blackwell Science Ltd., Oxford, 2002.
- Griffin, R. G., Pines, A., and Waugh, J. S.: Observation of C-13-N-14 Dipolar Couplings in Single-Crystals of Glycine, *Journal of Chemical Physics*, 63, 3676–3677, <https://doi.org/10.1063/1.431768>, 1975.
- Haberkorn, R. A., Stark, R. E., Vanwilligen, H., and Griffin, R. G.: Determination of Bond Distances and Bond Angles by Solid-State Nuclear Magnetic-Resonance - C-13 and N-14 Nmr-Study of Glycine, *Journal of the American Chemical Society*, 103, 2534–2539, <https://doi.org/10.1021/ja00400a008>, 1981.
- Harbison, G. S., Vogt, V. D., and Spiess, H. W.: Structure and Order in Partially Oriented Solids - Characterization by 2d-Magic-Angle-Spinning Nmr, *Journal of Chemical Physics*, 86, 1206–1218, <https://doi.org/10.1063/1.452265>, 1987.
- Hempel, G. and Schneider, H.: C-13 Nmr Investigations of the Structure in Solid Polymers, *Pure and Applied Chemistry*, 54, 635–646, 1982.
- Hempel, G., Jacobi, A., Weissflog, W., Griebel, M., and Reichert, D.: Mutual orientation of main chains and side chains in nematic liquid-crystalline side-chain polysiloxanes, *Macromolecular Chemistry and Physics*, 200, 1608–1618, 1999.
- Henrichs, P. M.: Molecular-Orientation and Structure in Solid Polymers with C-13 Nmr - a Study of Biaxial Films of Poly(Ethylene-Terephthalate), *Macromolecules*, 20, 2099–2112, <https://doi.org/10.1021/ma00175a010>, 1987.
- Hentschel, R., Schlitter, J., Sillescu, H., and Spiess, H. W.: Orientational Distributions in Partially Ordered Solids as Determined from NMR and ESR Line-Shapes, *Journal of Chemical Physics*, 68, 56–66, <https://doi.org/10.1063/1.435473>, 1978.
- Herzfeld, J. and Berger, A.: Sideband Intensities in NMR-Spectra of Samples Spinning at the Magic Angle, *Journal of Chemical Physics*, 73, 6021–6030, <https://doi.org/10.1063/1.440136>, 1980.
- King, J. A. and Bryant, G. L.: Structure of Diphenyl Carbonate, *Acta Crystallographica Section C-Crystal Structure Communications*, 49, 550–551, <https://doi.org/10.1107/S0108270192007571>, 1993.
- Kulik, A. S., Radloff, D., and Spiess, H. W.: Conformational Order in Molten Amorphous Poly(Ethyl Methacrylate), *Macromolecules*, 27, 3111–3113, <https://doi.org/10.1021/ma00089a032>, 1994.
- Liu, S.-F., Mao, J.-D., and Schmidt-Rohr, K.: A Robust Technique for Two-Dimensional Separation of Undistorted Chemical-Shift Anisotropy Powder Patterns in Magic-Angle-Spinning NMR, *J. Magn. Reson.*, 155, 15–28, <https://doi.org/10.1006/jmre.2002.2503>, 2002.
- Maricq, M. M. and Waugh, J. S.: NMR in Rotating Solids, *Journal of Chemical Physics*, 70, 3300–3316, <https://doi.org/10.1063/1.437915>, 1979.
- Robyr, P., Utz, M., Gan, Z., Scheurer, C., Tomaselli, M., Suter, U. W., and Ernst, R. R.: Orientation of the chemical shielding anisotropy tensor of the carbonate carbon in diphenyl carbonate and its consequences for NMR studies on polycarbonate, *Macromolecules*, 31, 5818–5822, <https://doi.org/10.1021/ma980446o>, 1998.
- Roe, R. J.: Methods of Description of Orientation in Polymers, *Journal of Polymer Science Part a-2-Polymer Physics*, 8, 1187–1194, <https://doi.org/10.1002/pol.1970.160080713>, 1970.

- Schmidt-Rohr, K. and Spiess, H.: *Multidimensional Solid-State NMR and Polymers*, Academic Press Ltd., San Diego, 1994.
- Schmidt-Rohr, K., Hehn, M., Schaefer, D., and Spiess, H. W.: 2-Dimensional Nuclear-Magnetic Resonance with Sample Flip for Characterizing Orientation Distributions, and its Analogy to X-Ray-Scattering, *Journal of Chemical Physics*, 97, 2247–2262, <https://doi.org/10.1063/1.463116>, 1992.
- 640 Spiess, H. W.: *NMR in oriented polymers*, pp. 47–78, Applied Science Publishers, Ltd., Essex, England, 1982.
- Titman, J. J., Delacroix, S. F., and Spiess, H. W.: Structure and Order in Partially Oriented Solids by 3-Dimensional Magic Angle Spinning Nuclear-Magnetic-Resonance Spectroscopy, *Journal of Chemical Physics*, 98, 3816–3826, <https://doi.org/10.1063/1.464010>, 1993.
- Titman, J. J., Tzou, D. L., Delacroix, S. F., Boeffel, C., and Spiess, H. W.: Molecular order in a homologous series of liquid-crystalline side group polymers from multidimensional carbon-13 and silicon-29 NMR spectroscopy, *Acta Polymerica*, 45, 204–209, <https://doi.org/10.1002/actp.1994.010450311>, 1994.
- 645 Utz, M., Atallah, A. S., Robyr, P., Widmann, A. H., Ernst, R. R., and Suter, U. W.: Solid-state NMR investigation of the structural consequences of plastic deformation in polycarbonate. 1. Global orientational order, *Macromolecules*, 32, 6191–6205, <https://doi.org/10.1021/ma990061l>, 1999.
- Vogt, V. D., Dettenmaier, M., Spiess, H. W., and Pietralla, M.: Orientation of the Diphenylene Propane Unit in Stretched Polycarbonate from 2-Dimensional Magic-Angle-Spinning Nmr, *Colloid and Polymer Science*, 268, 22–27, <https://doi.org/10.1007/Bf01410418>, 1990.
- 650 Williams, E. A., Cargioli, J. D., and Hobbs, S. Y.: C-13 and Si-29 Nuclear Magnetic-Resonance Analysis of Bisphenol a Polycarbonate-Polydimethylsiloxane Block Copolymers, *Macromolecules*, 10, 782–785, <https://doi.org/10.1021/ma60058a012>, 1977.